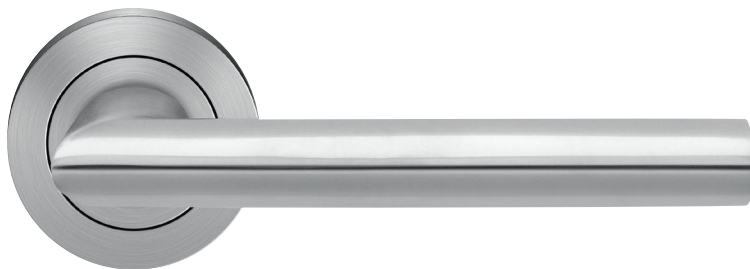


Tear Sheet for Mortise set  
Model Verona on rose by KARCHER DESIGN

**KARCHER**  
**DESIGN**  
GERMANY

contact our US office  
Karcher Design USA  
Tukwila, Seattle  
+1 844 858 2033  
order@karcher-design.com



**Verona**

Finish: satin stainless steel (71)

**Verona on Rose, special door prep required**



**Verona- TER 37Q**  
**2 1/16" x 2 1/16"**



**Verona- TER 37**  
**Ø 2 1/16" x 7/16"**

**Features TER37Q and TER37**

- 3 piece rose
- concealed bolt-through fixing
- sprung
- door range 1 1/2" (38 mm) - 1 7/8" (48 mm) standard
- stainless steel faceplate
- Accurate UL Listed Mortise Lock
- available with UL-Latch
- rate of satin stainless steel 304
- hub 5/16" (8 mm)
- available finish: satin stainless steel, polished stainless steel, polished/satin stainless steel

**Product code Mortise set square**

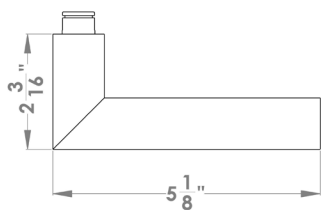
TER37Q PRI 9139 71	Accurate privacy without cylinder
TER37Q STORE 9195 71	Accurate storeroom/nitelatch
TER37Q ENT 9167 71	Accurate entrance set without cylinder
TER37Q ENT 9169 71	Accurate entrance set without cylinder
UEZ1340 CC 71	cylinder colar
UEZ1340 TT 71	thumbturn
UEZ1340 BAD 71	privacy thumbturn

**round**

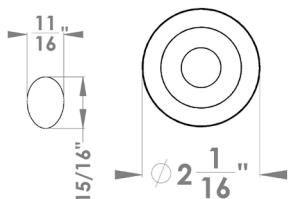
TER37 PRI 9139 71	Accurate privacy without cylinder
TER37 STORE 9195 71	Accurate storeroom/nitelatch
TER37 ENT 9167 71	Accurate entrance set without cylinder
TER37 ENT 9169 71	Accurate entrance set without cylinder
UEZ1332 CC 71	cylinder colar
UEZ1332 TT 71	thumbturn
UEZ1332 BAD 71	privacy thumbturn

**specification details**

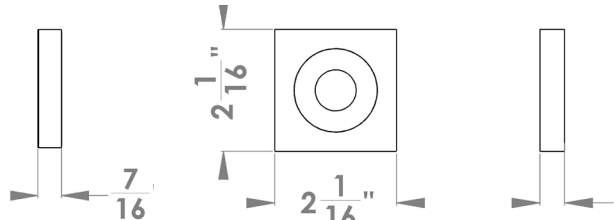
lever



round rose



square rose



Please note: Karcher Design products are designed and measured in metric. Imperial measurements are close approximations to the actual metric dimensions