

Tear Sheet for Mortise set
Model Ontario on rose by KARCHER DESIGN



contact our US office
Karcher Design USA
Tukwila, Seattle
+1 844 858 2033
order@karcher-design.com



Ontario

Finish: Satin stainless steel (73)

Ontario on Rose, special door prep required



Ontario- TER 64Q
2 1/16" x 2 1/16"

product code latch set square

TER64Q LA60 73	passage 2 3/8" backset
TER64Q LA70 73	passage 2 3/4" backset
TER64Q DUM 73	full dummy
TER64Q DUM L 73	half dummy left
TER64Q DUM R 73	half dummy right
UEZ1340 PB 73	privacy bolt



Ontario- TER 64
Ø 2 1/16" x 7/16"

round

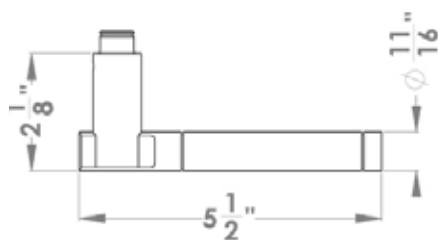
TER64 LA60 73	passage 2 3/8" backset
TER64 LA70 73	passage 2 3/4" backset
TER64 DUM 73	full dummy
TER64 DUM L 73	half dummy left
TER64 DUM R 73	half dummy right
UEZ1332 PB 73	privacy bolt

Features TER64Q and TER64

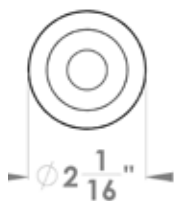
- 3 piece rose
- concealed bolt-through fixing
- sprung
- door range 1 1/2" (38 mm) - 1 7/8" (48 mm) standard
- T- and Lip-Strike with dust box
- stainless steel faceplate
- backsets: 2 3/8" (60 mm) or 2 3/4" (70 mm)
- functions: Passage (LA), full dummy (DUM), dummy left (DUM L), dummy right (DUM R)
- available with UL-Latch
- 28° latch with attached face plate
- rate of satin stainless steel 304
- hub 5/16" (8 mm)
- finish: polished/satin stainless steel

specification details

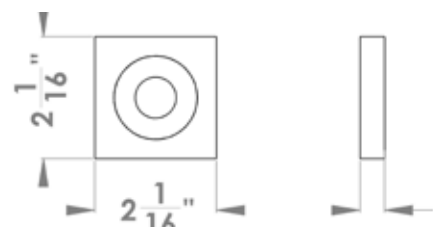
lever



round rose



square rose



Please note: Karcher Design products are designed and measured in metric. Imperial measurements are close approximations to the actual metric dimensions