

Tear Sheet for Mortise set
Model Crete on rose by KARCHER DESIGN

KARCHER
DESIGN
GERMANY

contact our US office
Karcher Design USA
Tukwila, Seattle
+1 844 858 2033
order@karcher-design.com



Crete

Finish: Satin stainless steel (71)

Crete on Rose, special door prep required



Crete- TER 27Q
2 1/16" x 2 1/16"



Crete- TER 27
Ø 2 1/16" x 7/16"

Features TER27Q and TER27

- 3 piece rose
- concealed bolt-through fixing
- sprung
- door range 1 1/2" (38 mm) - 1 7/8" (48 mm) standard
- stainless steel faceplate
- Accurate UL Listed Mortise Lock
- available with UL-Latch
- rate of satin stainless steel 304
- hub 5/16" (8 mm)
- available finish: satin stainless steel

Product code Mortise set square

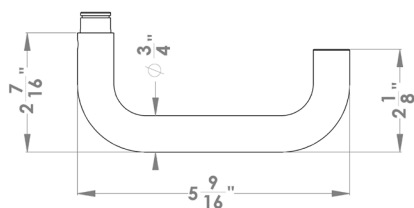
TER27Q PRI 9139 71	Accurate privacy without cylinder
TER27Q STORE 9195 71	Accurate storeroom/nitelatch
TER27Q ENT 9167 71	Accurate entrance set without cylinder
TER27Q ENT 9169 71	Accurate entrance set without cylinder
UEZ1340 CC 71	cylinder colar
UEZ1340 TT 71	thumbturn
UEZ1340 BAD 71	privacy thumbturn

round

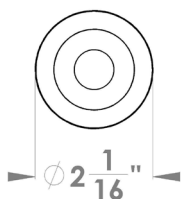
TER27 PRI 9139 71	Accurate privacy without cylinder
TER27 STORE 9195 71	Accurate storeroom/nitelatch
TER27 ENT 9167 71	Accurate entrance set without cylinder
TER27 ENT 9169 71	Accurate entrance set without cylinder
UEZ1332 CC 71	cylinder colar
UEZ1332 TT 71	thumbturn
UEZ1332 BAD 71	privacy thumbturn

specification details

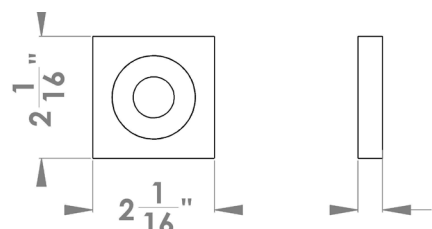
lever



round rose



square rose



Please note: Karcher Design products are designed and measured in metric. Imperial measurements are close approximations to the actual metric dimensions